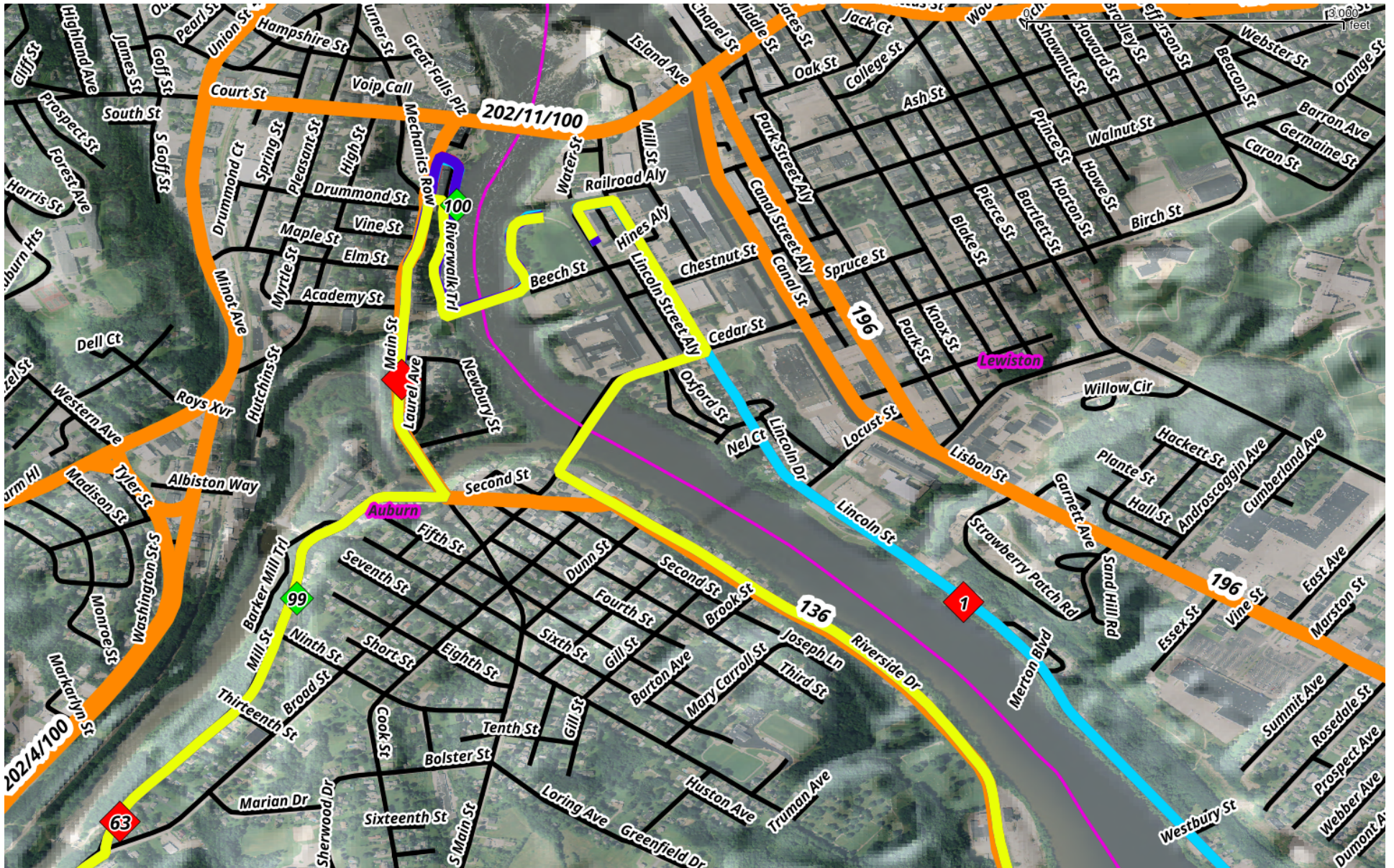
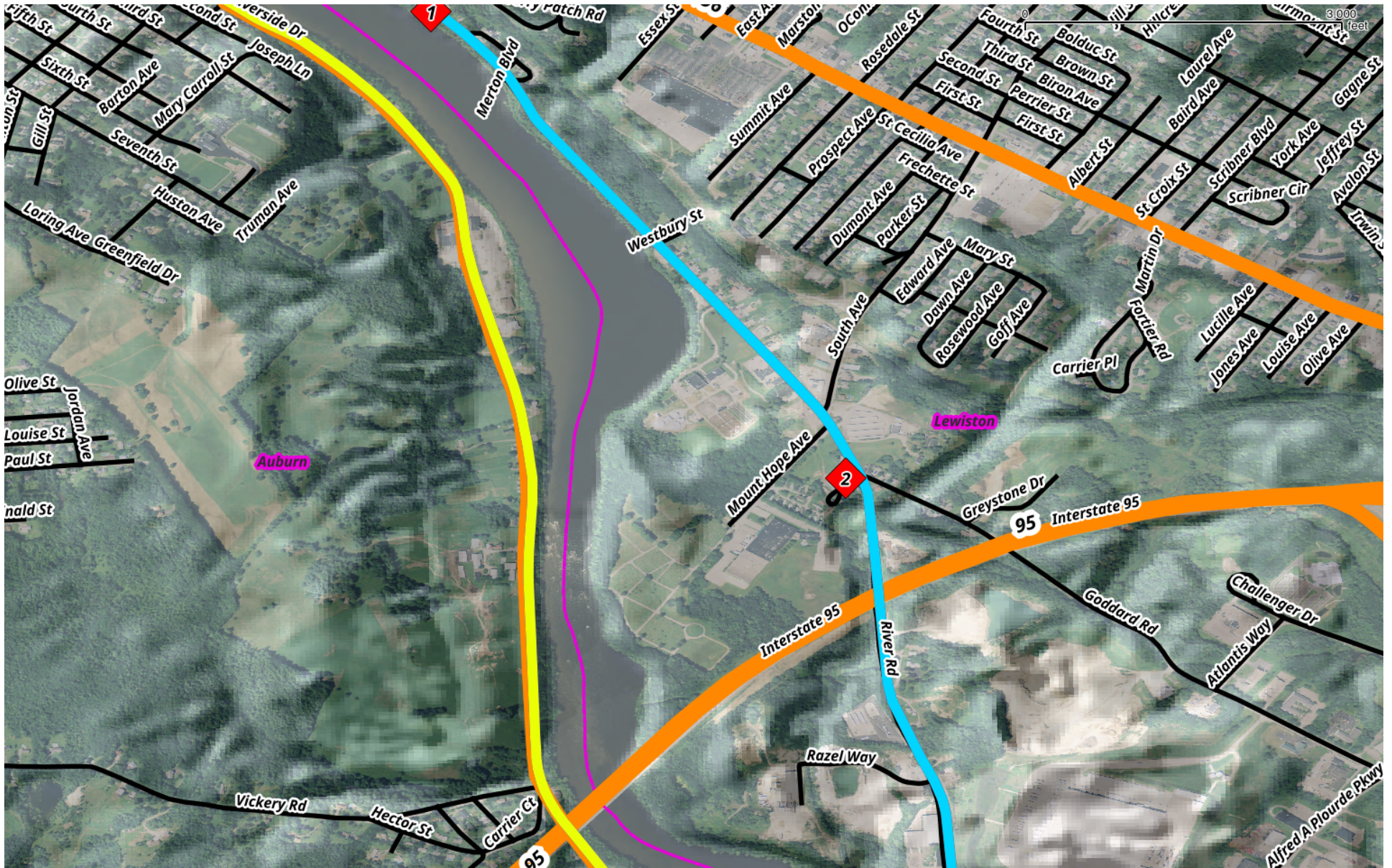


First Mile of 50-65-100mile



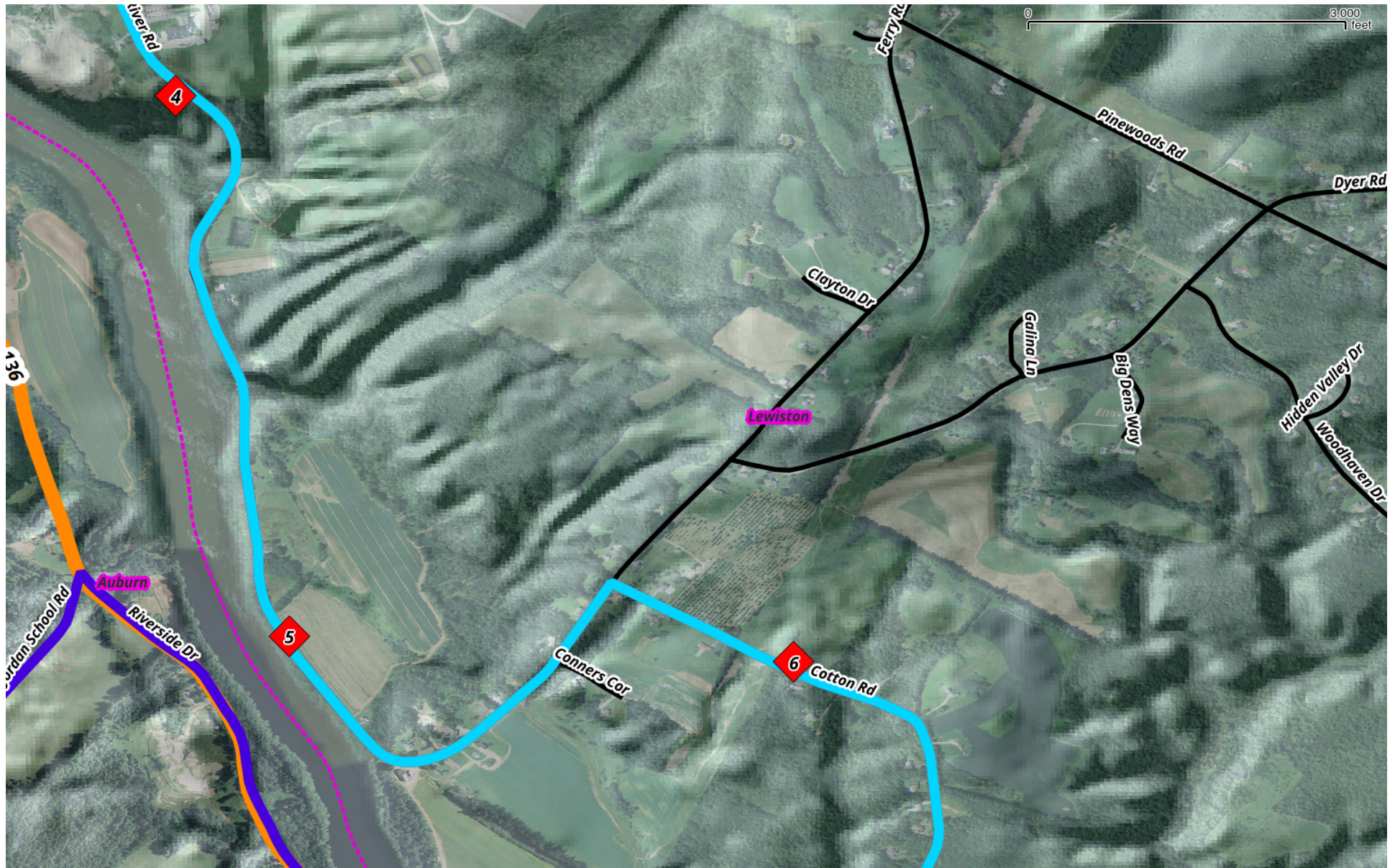
Second Mile of 50-65-100mile NOTE: Lincoln St Becomes River Road at South Ave



Third Mile of 50-65-100mile *NOTE: Right Turn at End of Alfred Plourde Parkway to continue on River Rd**



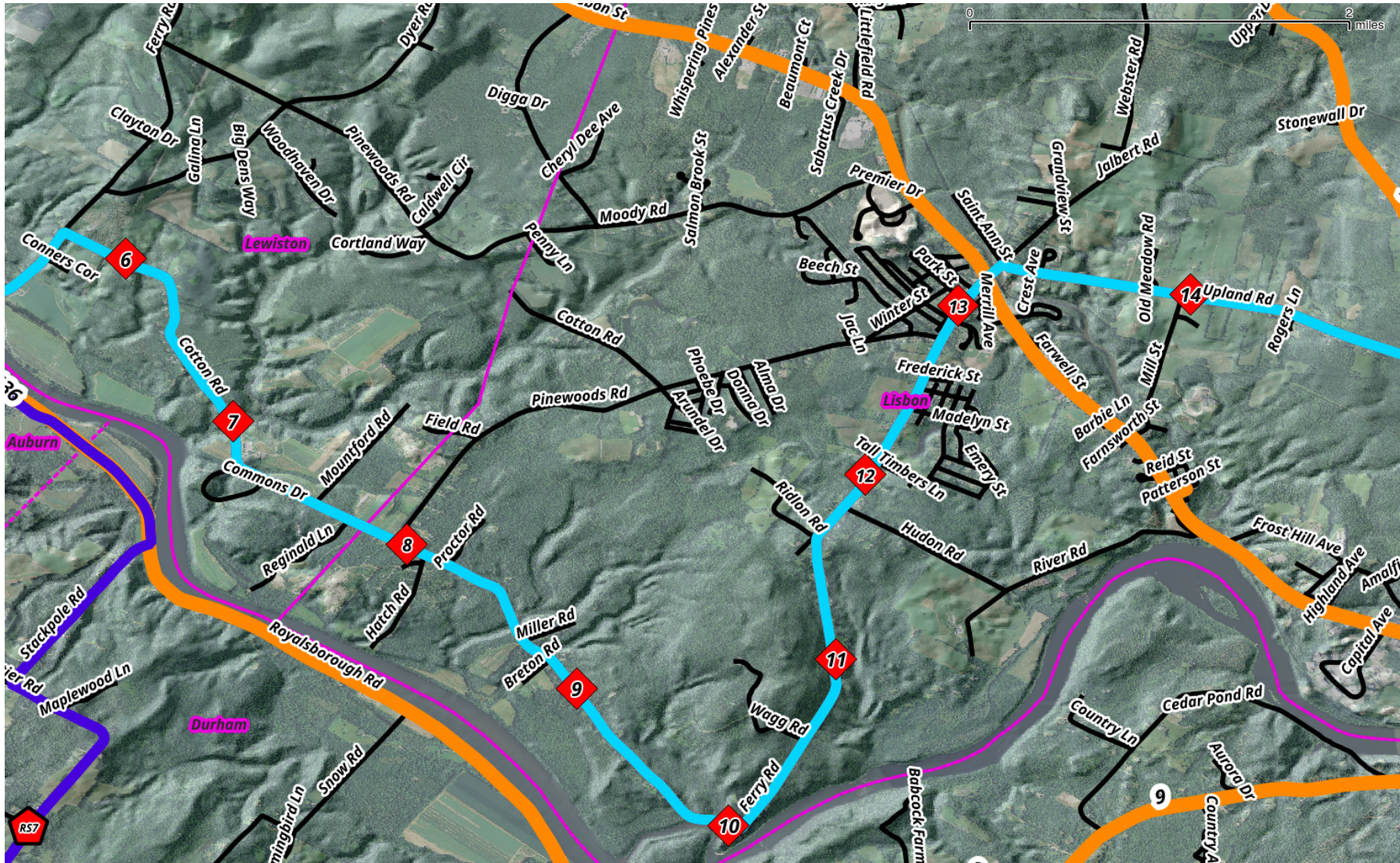
Miles 4 to 6 of 50-65-100mile ***NOTE: River Road ends, and Ferry Road Begins at SHARP Left Turn**



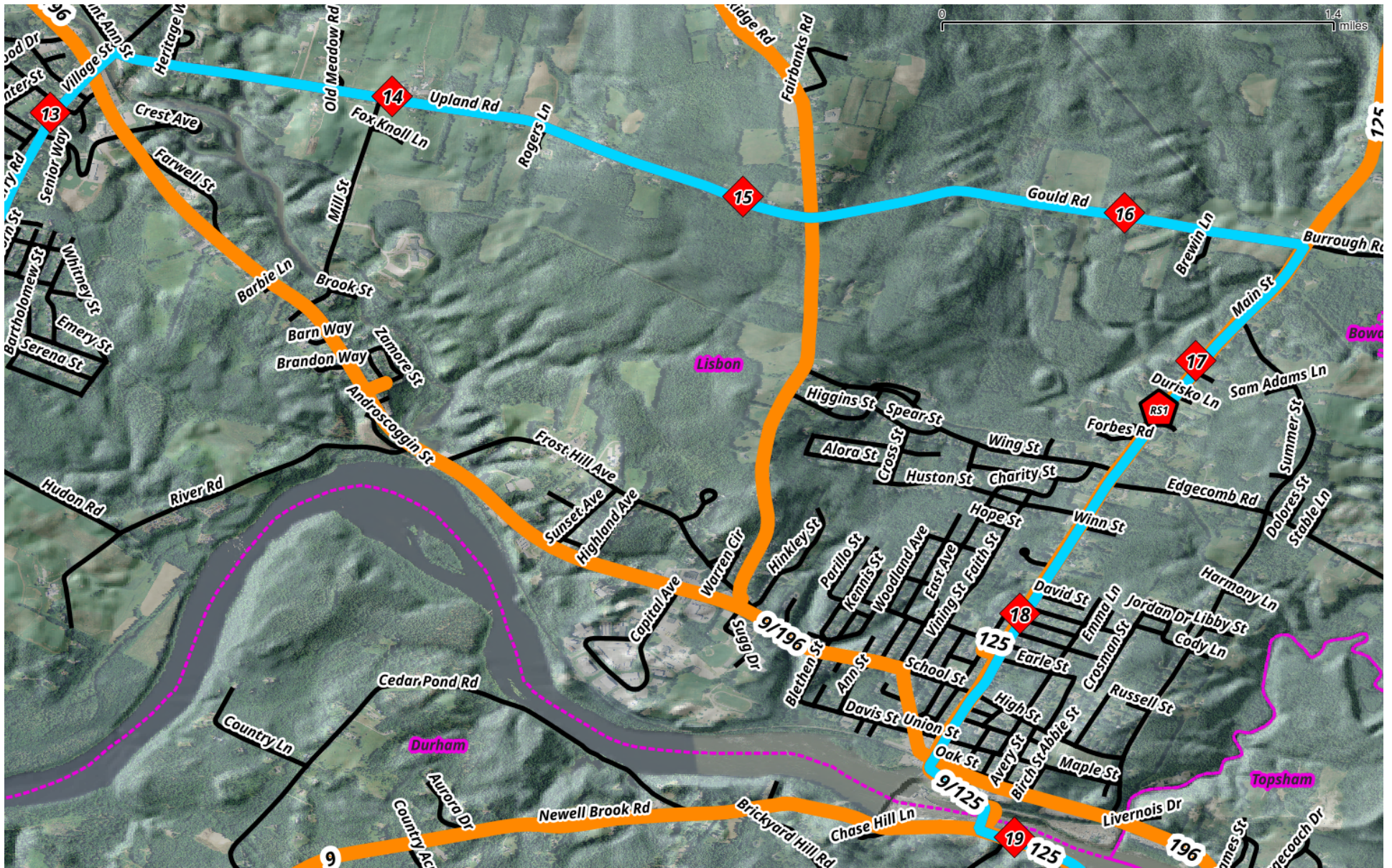
Miles 6 to 14 of 50-65-100mile ***NOTES:**

Less than ½ mile from SHARP Turn(Ferry Road mile-10), Make Right Turn onto Cotton Road

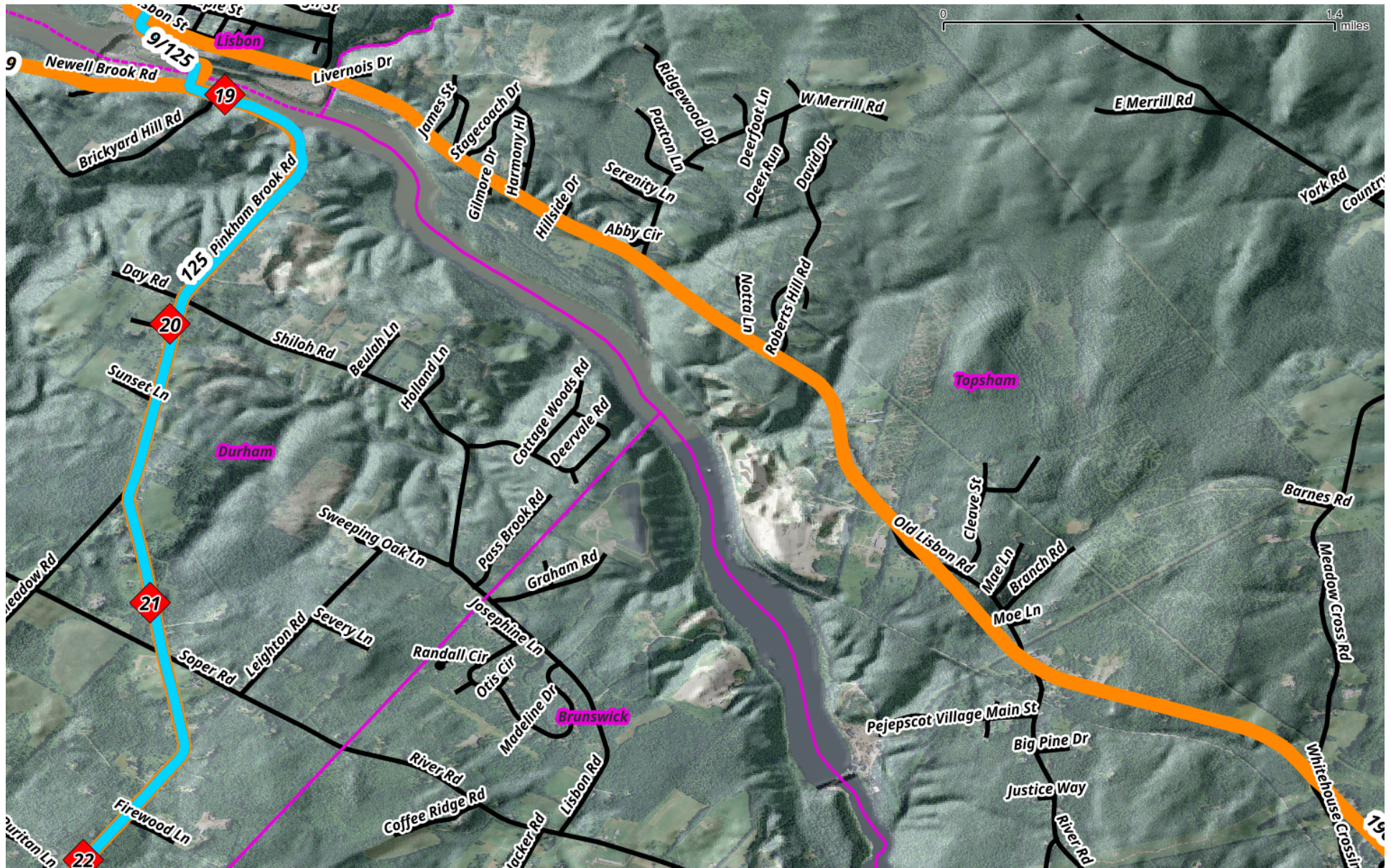
Cotton Road Becomes Ferry Road at Lewiston/Lisbon Town Line



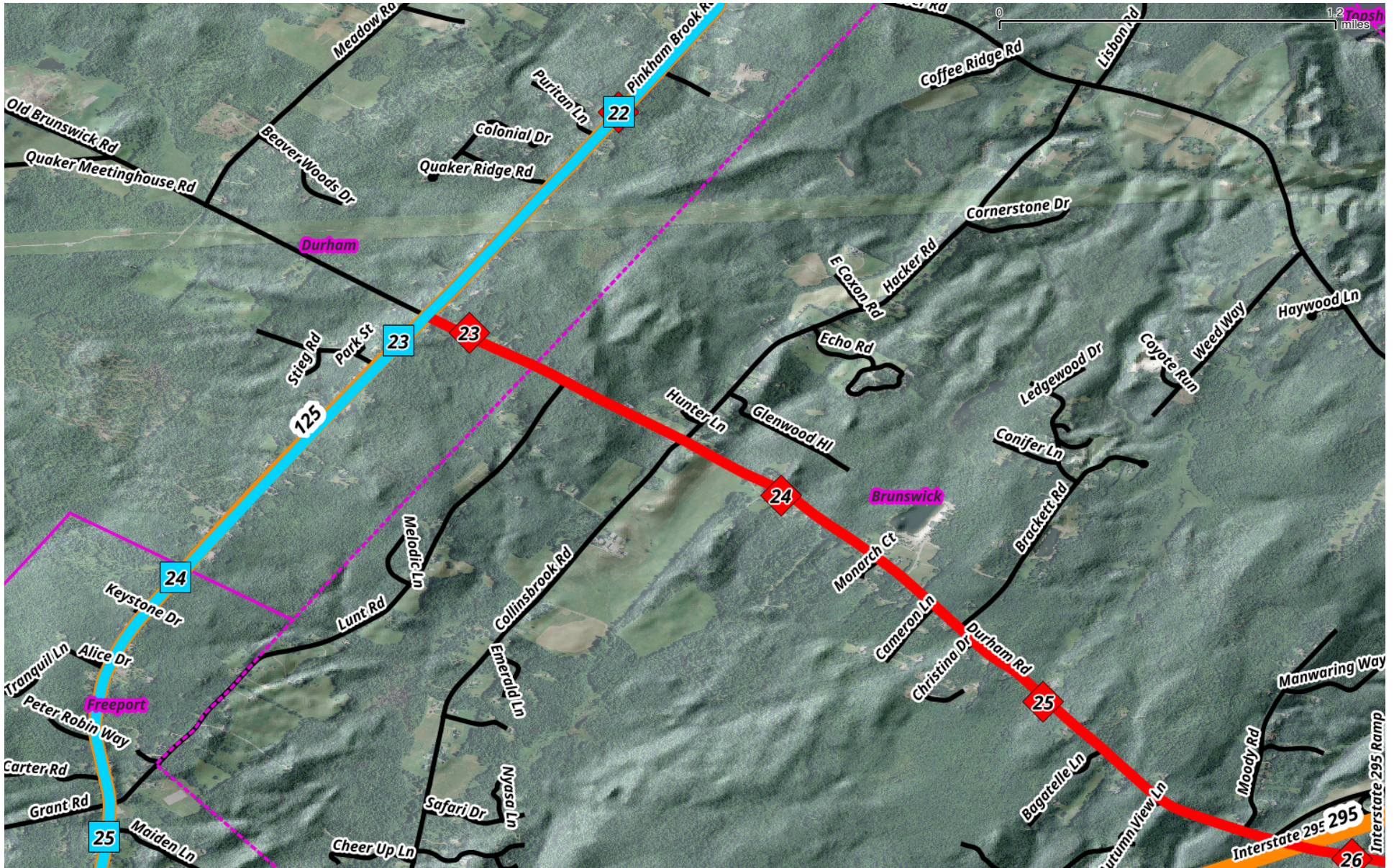
Miles 13 to 19 of 50-65-100mile



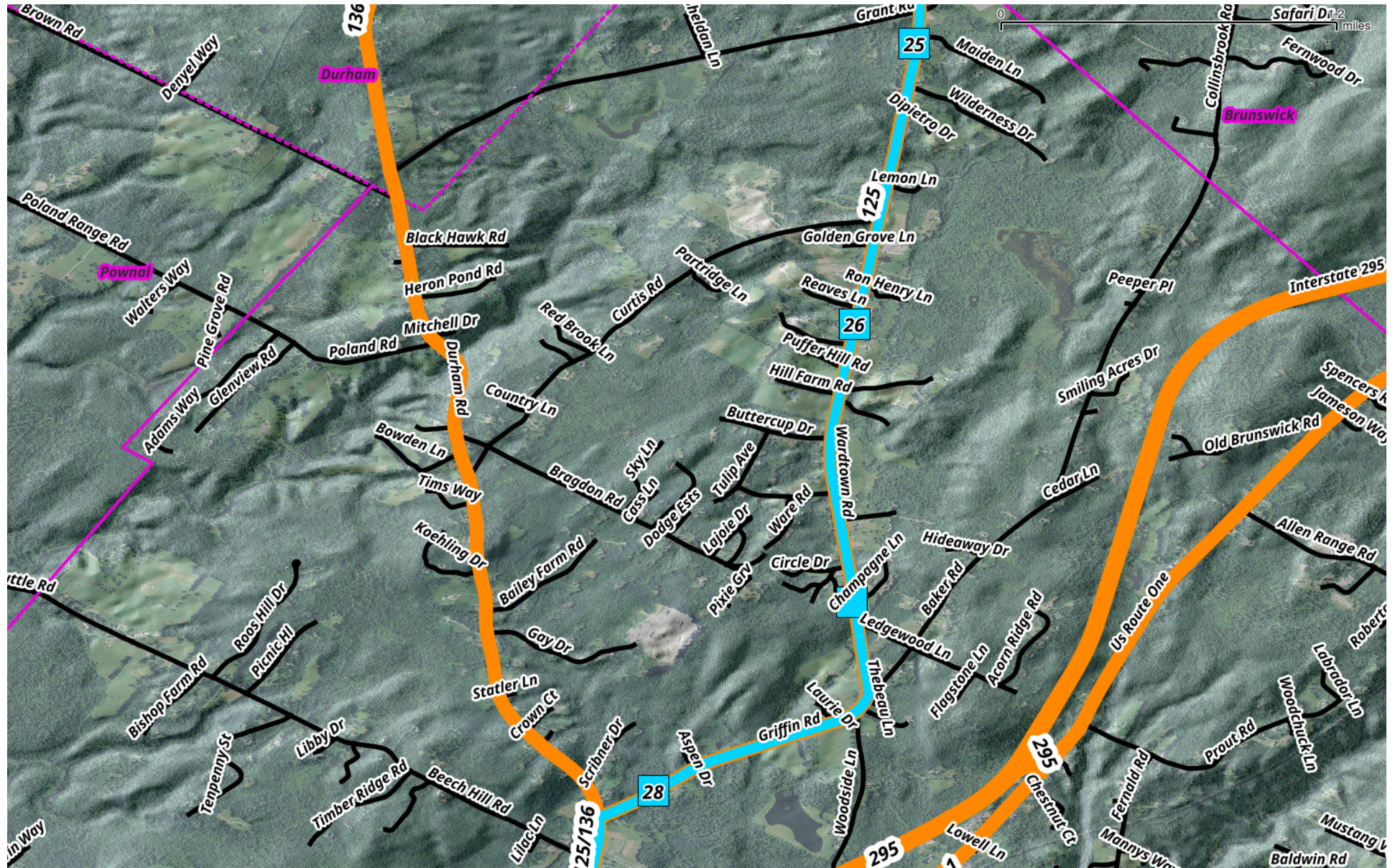
Miles 19 to 22 of 50-65-100mile *****NOTES: South End of Lisbon/Durham Bridge Caution on Left Turn



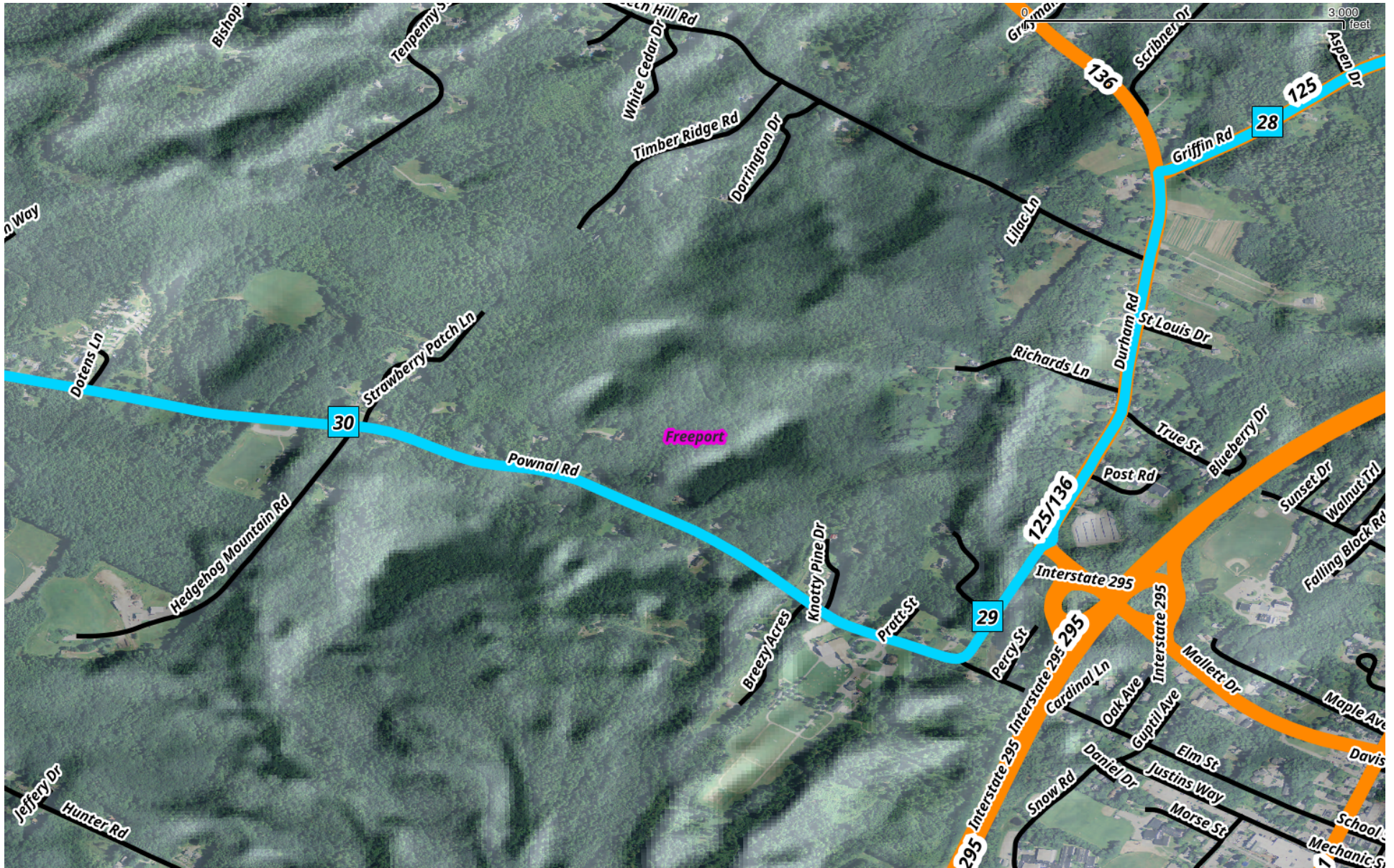
Miles 22 to 25 of 50-65-100mile *****NOTES: 50 and 65/100-miles Routes split just before mile 23



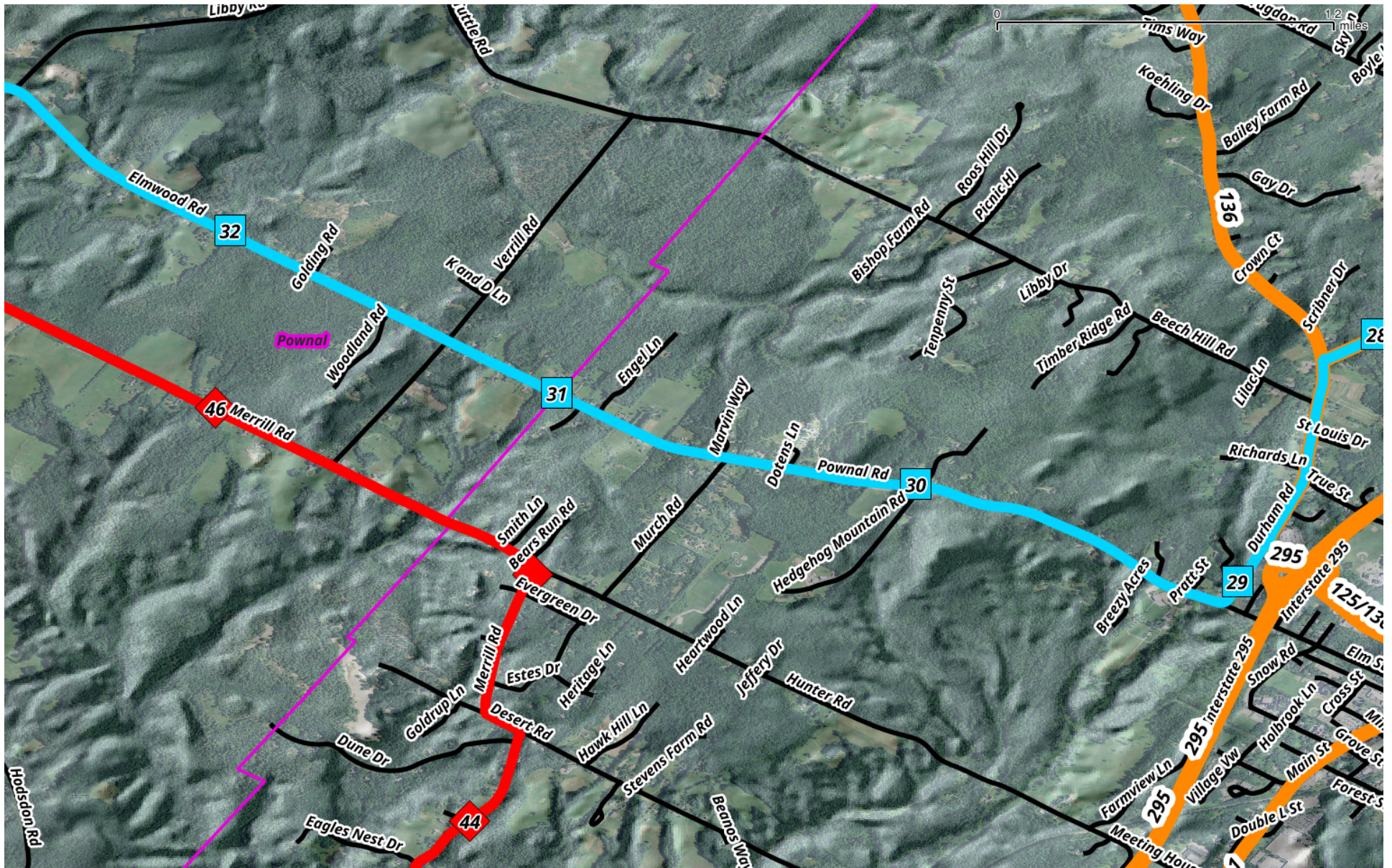
Miles 25 to 28 of 50-mile



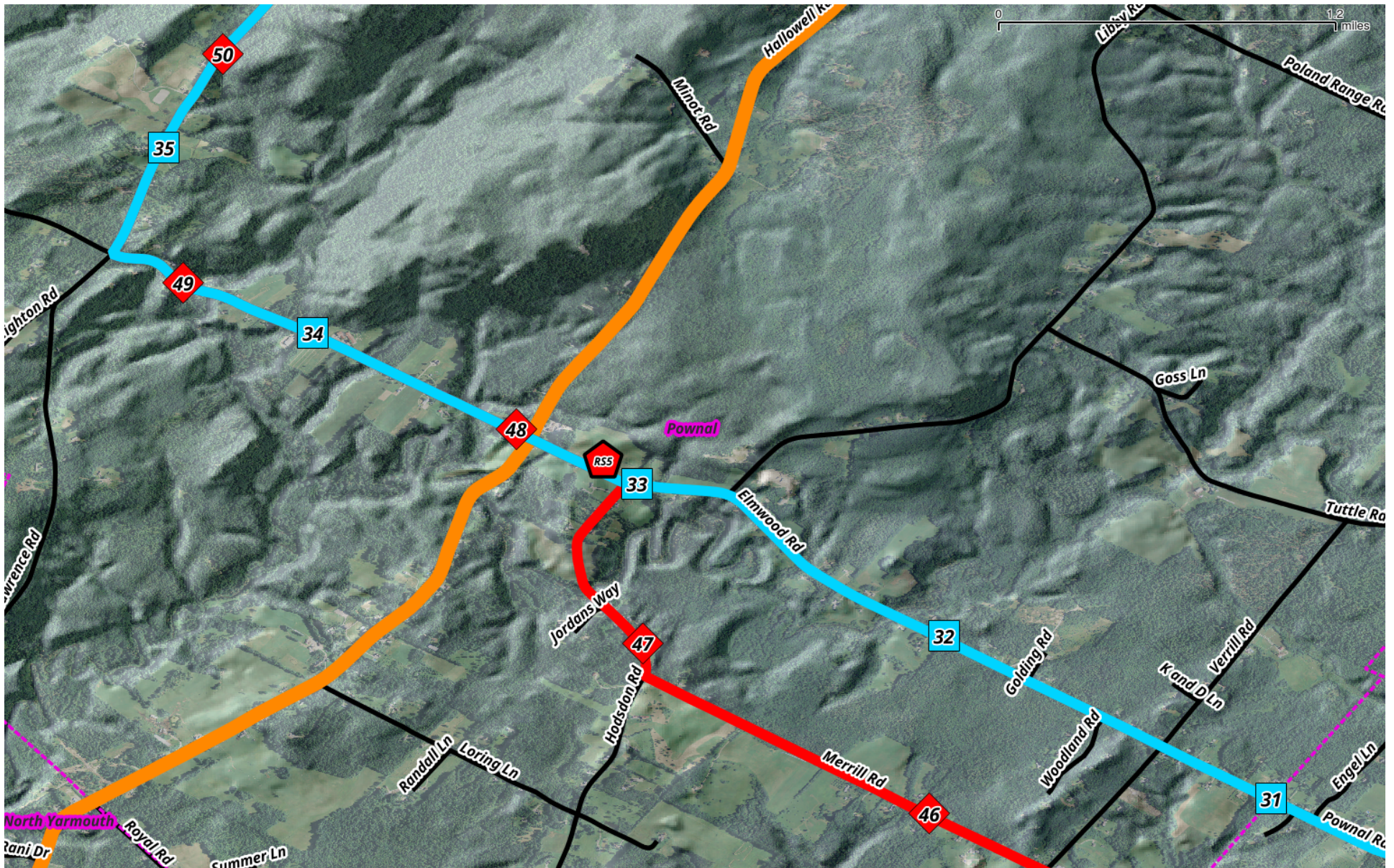
Miles 28 to 30 of 50-mile



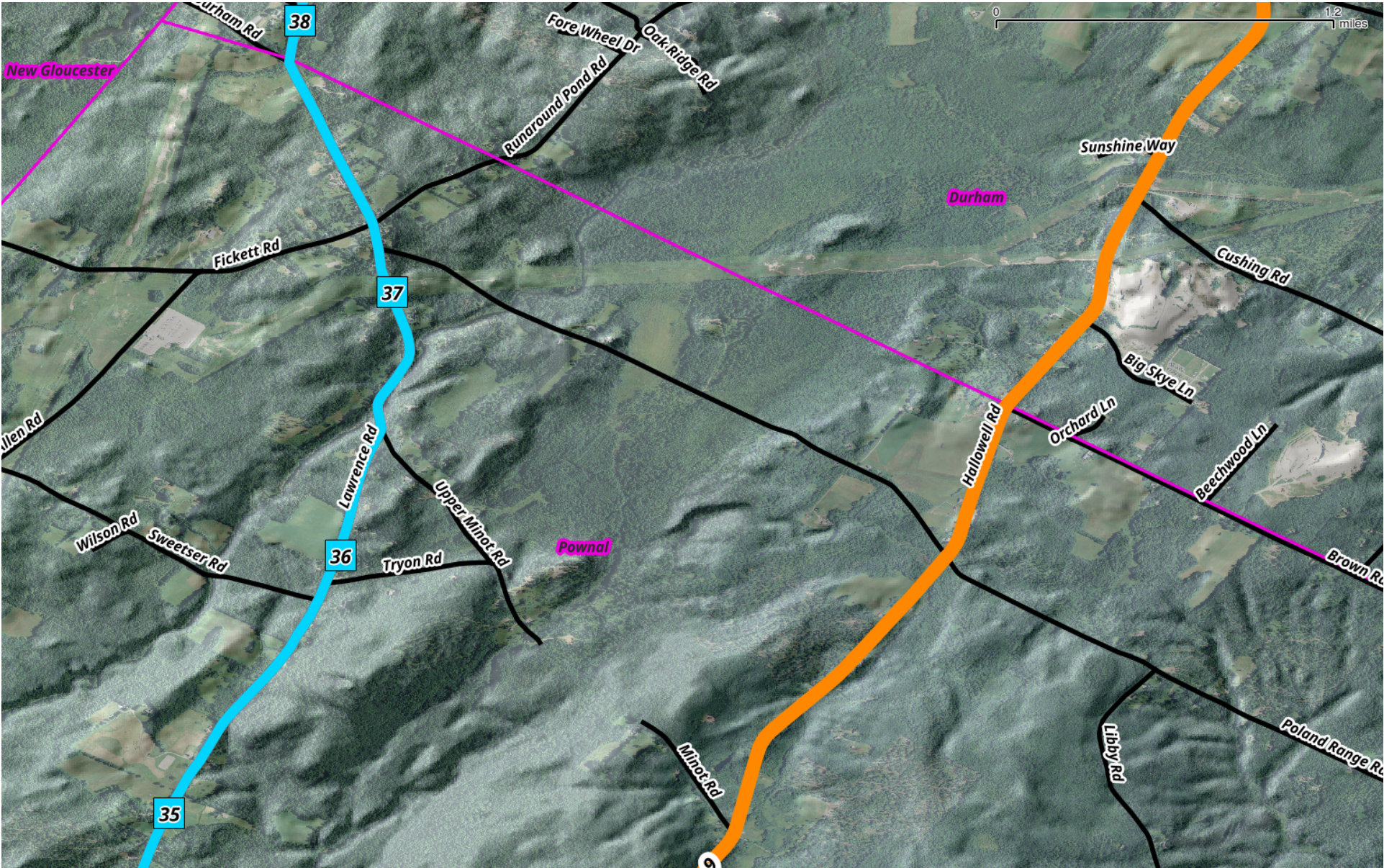
Miles 29 to 32 of 50-mile



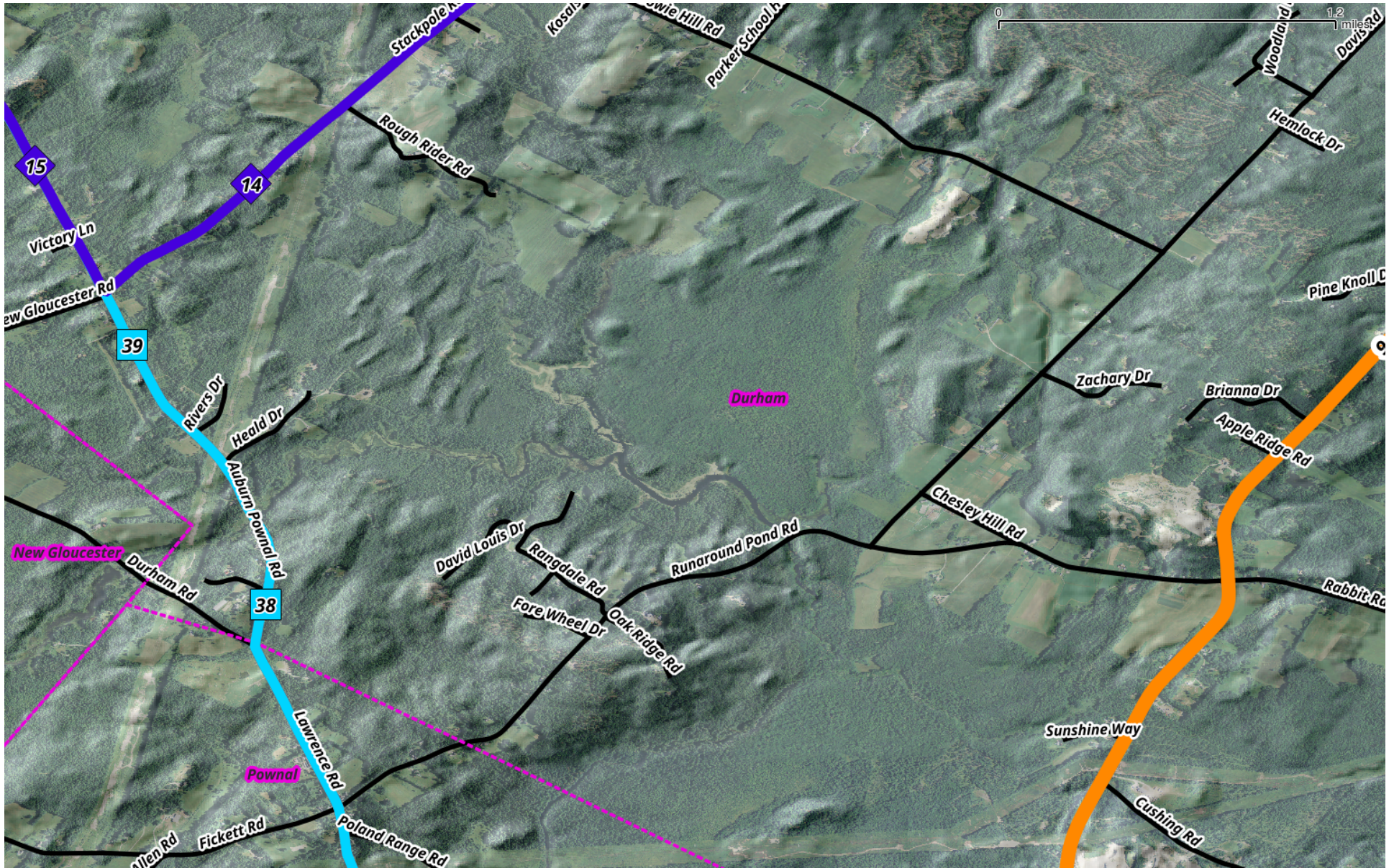
Miles 31 to 35 of 50-mile Note: 65/100-mile REJOINS 50-mile at mile 33 and Rest Stop #4



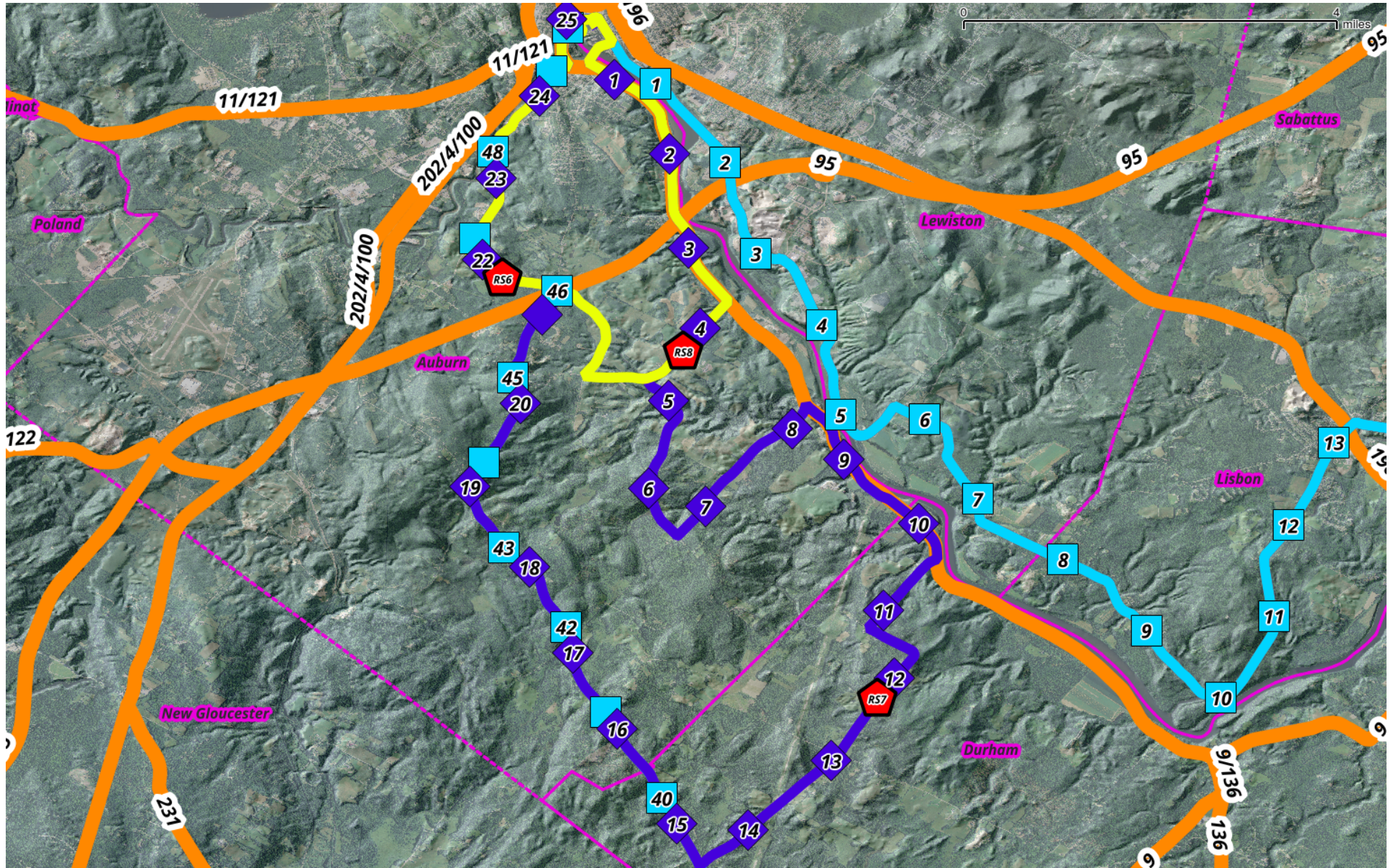
Miles 35 to 38 of 50-mile



Miles 38 to 39 of 50-mile(Light Blue) 25-mile joins 50-65-100-mile



10 and 25-mile Routes overview



All Eight Rest Stops

